

# Planning Sheet

Name:.....

This page reflects the Sectional Planner on eDofE and will help you fill eDofE out

You MUST submit the plan on eDofE to your Leader, who will approve on eDofE

Do not leave the Plan in draft because the Leader won't see it and it could be wrong for DofE. It can always be changed on eDofE by using "revert to draft" <http://www.dofe.info/go/edofehelp/>

- ✓ Use ideas lists inside your Welcome Pack AND use this volunteering ideas page for local ideas:  
<http://www.gillinghamdofe.co.uk/volunteering-for-participants/>
- ✓ Find assessor and agree what you want to do (your Goals) with them
- ✓ Talk this thru with your Leader so you know your choices are right for DofE!
- ✓ Log in and Fill in Prog Planners on eDofE
- ✓ SUBMIT Prog Planner on eDofE (you can change it later if it needs amending by using "revert to draft")
- ✓ Even after starting, if things go a little awry, activities and/or timescales can be changed – ask!

Bronze timescales: 3mths on Vol, Phy, Skill PLUS 3mths on one of them  
 Silver timescales: (with Bronze) – 6mth Vol; 3 or 6mth Skill; 3 or 6 mth Phy  
 Direct – add 6 mths to one of the 6mth categories you choose to do  
 Gold timescales: (with Silver) – 12mth Vol; 6 or 12mth Skill; 6 or 12mth Phy PLUS Residential (PTO)  
 Direct – add 6mths to one of the 12mth categories you choose

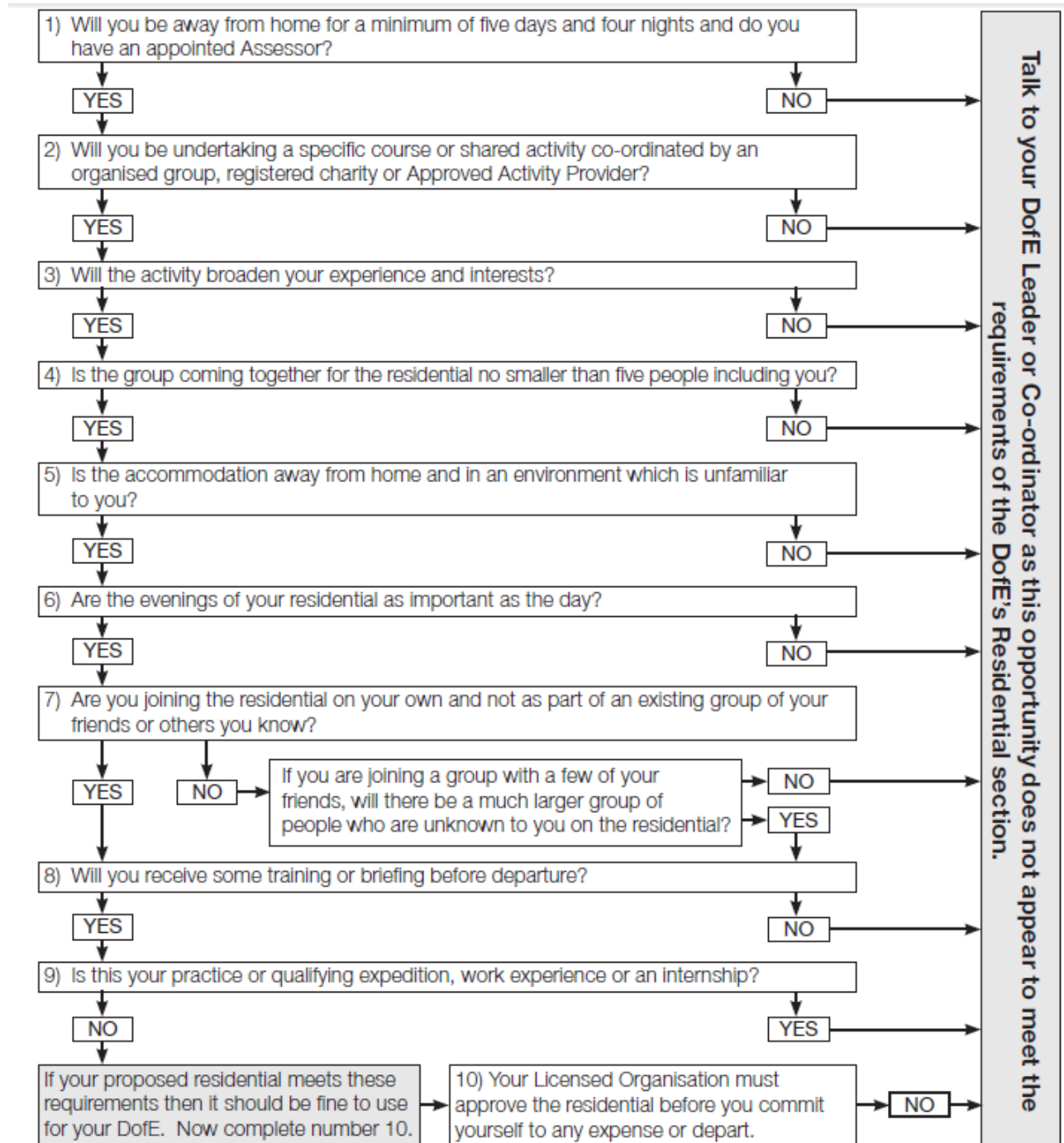
	Volunteering	Physical	Skill	Exped
Timescale In mths, as above				Please do not enter anything in Exped section other than Aim and Personal Goals. They can be put in immediately as below and changed later if wanted.
Start date				
Type or category of activity (Sub Heading on the ideas list)				
Detail (Simply the activity)				
Where are you going to do it (please put approx timings of sessions in here too - its regular commitment OVER the timescale – NOT total hours in a shorter period of time)				
Goals? What do you want to achieve? (to agree with assessor)				
				Personal Goals: Eg: fun; make new friends; work well in a team
Who is going to assess you? (Close family cannot be assessors but can be mentors/instructors – ask leader to help)				
What position do they hold? E.g. Mgr; Instr; Neighb'r				

# Residential (GOLD)

## Does it count for your Programme?

This flowchart takes you through all the things you need to consider.

Bottom line: check with your DofE Leader, who will check it out with the DofE Mgr.



Approved Activity Providers can be found here and will be fine as they are AAPs

<http://www.dofe.org/en/content/cms/leaders/approved-providers/residential/>

Also do an Internet Engine search using “volunteer” “residential” to find other ideas **BUT CHECK IT OUT** as above with your Leader.